

"QMF"

Square Cased Mixed Flow

Airflow to 4.17 m³/sec

Features and benefits

Square Cased Mixed Flow Fans

- 1 and 3 phase
- Plant (Roof models available)
- Airflow to 4.17 m³/sec, pressure to 600 Pa
- IP54 rated



Connection

Unique, integral terminal box allows for electrical connections on two sides of casing for flexible installation

Accessories

Transformer speed controller

Operation

Single phase sizes suitable for air temperature between -10°C and +60°C

Three phase size suitable for air temperature between -10°C and +40°C

"QMF" Range

4 sizes from 350 to 560 mm

Robust construction

Casing in 1mm thick galvanised sheet steel

External rotor type 4 pole motor

Connections for thermal cut-out protection

Integral motor/impeller assembly

Polyamide impeller in 350, 450 and 500mm sizes

Aluminium impeller in 560mm size

Flanged connection for quick and simple installation

SQUARE CASED MIXED FLOW FANS - QMF

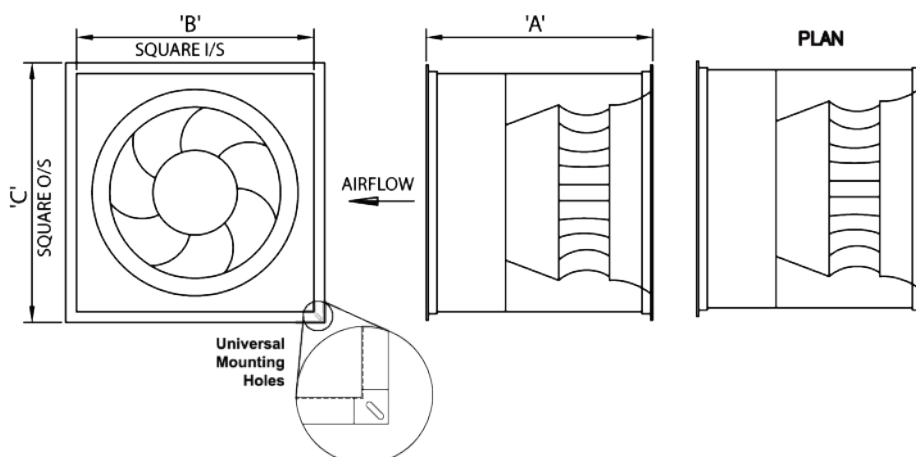
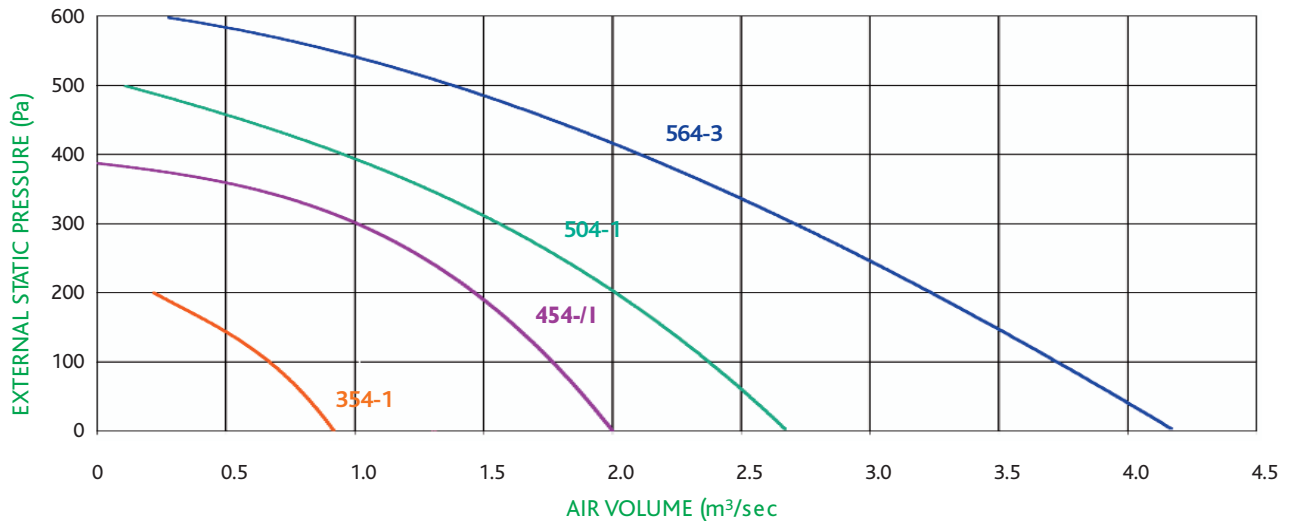
TECHNICAL DATA - QMF

Model	Size		Power Kw	Current amps	SC amps	Speed rpm	Transformer	Sound Level dB A at 3m	Sound Power Levels dB							
	ins	cm							Mid Octave Bands (Hz)							
									63	125	250	500	1000	2000	4000	8000
QMF354-1	14	35	.310	1.35	3.7	1390	QA1.4	53	77	76	74	68	64	62	56	50
QMF454-1	18	45	.910	4.4	9.2	1260	QA5	61	85	84	82	76	72	70	64	58
QMF504-1	20	50	1.45	6.1	15.0	1310	QA7	62	86	85	83	77	73	71	65	59
QMF564-3	22	56	2.40	4.3	20.0	1350	RTR07	69	93	92	90	84	80	78	72	66

PERFORMANCE - QMF

Model	Max m ³ /hr	Max m ³ /sec	m ³ /sec at Pa													
			0	50	100	150	200	250	300	350	400	450	500	550	600	
QMF354-1	3312	0.92	0.92	0.81	0.67	0.47	0.22	-	-	-	-	-	-	-	-	-
QMF454-1	7200	2.00	2.00	1.88	1.79	1.61	1.48	1.25	1.02	0.61	-	-	-	-	-	
QMF504-1	9612	2.67	2.67	2.56	2.35	2.20	2.00	1.81	1.59	1.28	0.94	0.56	0.11	-	-	
QMF564-3	15012	4.17	4.17	3.96	3.75	3.51	3.23	2.95	2.67	2.43	2.12	1.80	1.41	0.83	0.28	

TECHNICAL DATA - QMF - CURVES & DIMENSIONS



Model	A	B	C	Kg
QMF354-1	400	450	500	18
QMF454-1	505	550	620	35
QMF504-1	535	661	731	45
QMF564-3	570	700	770	54

STP/STR bespoke Air Handling Units

- Bespoke or modular, supply, extract or combined
- Plantroom or weatherproof, stacked, side x side and vertical models up to 20m³/s air volume
- Adhere to specialist sector specification
- Versatile fitted control options
- Sectionalised units and flat pack available



HRPSL/HRRSL - Heat Recovery Units

- Standard designs up to 4m³/s air volume
- Plantroom or weatherproof, stacked or side x side models
- High efficiency Counterflow heat exchanger
- Versatile fitted control options



IME/IMW/EME/EMW - Compact Supply Air Handling Units

SPE/SRE/SPW/SRW - Supply Air Handling Units

- Pre-designed units up to 1.2m³/s air volume
- Plantroom and weatherproof models
- Electric or water heating options
- Matched control panel options



QST-EC/EMT-EC - Acoustic Twin Cabinet Fans

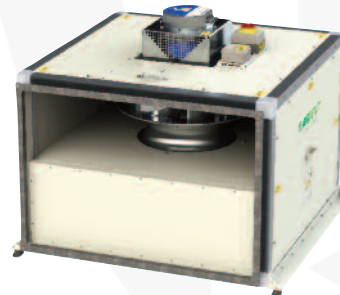
QSS-EC/EM-EC - Acoustic Cabinet Fans

- Pre-designed units up to 2.5m³/s air volume
- Plantroom and weatherproof models
- Matched control panels. Twin fans with auto-changeover facility



QBK - High Temperature Extract Fans

- Plantroom and weatherproof models
- Up to 8m³/s air volume
- Fire rated options available
- Matched control panel options including gas interlock



Air Vent Technology Ltd

56 Reith Way, Portway Industrial Estate

Andover, Hampshire, SP10 3TY

T: +44(0)1264 356415

E: sales@airventtechnology.co.uk

www.airventtechnology.co.uk

Part of the **Vectaire** Group of Companies